

Barco tipo granelero

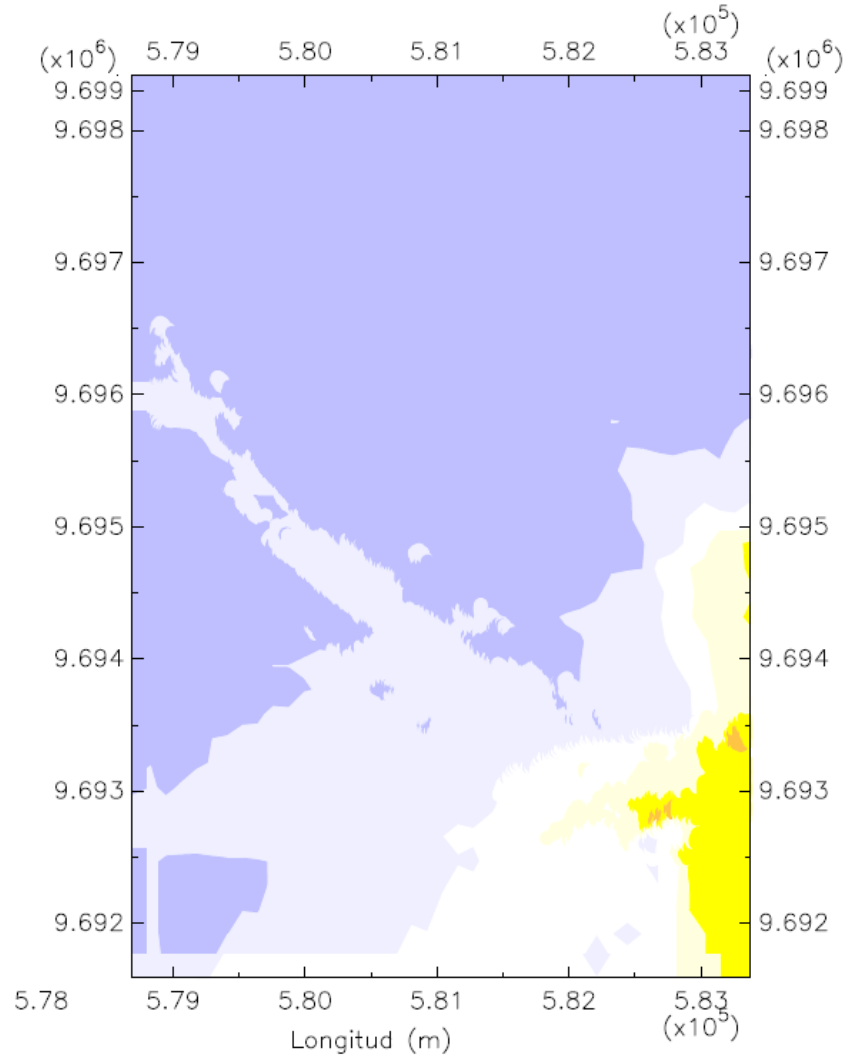
Eslora: 225 m

Manga: 32.20 m

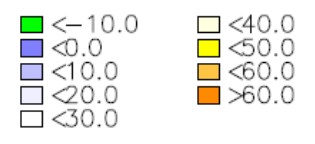
Calado: 12 m

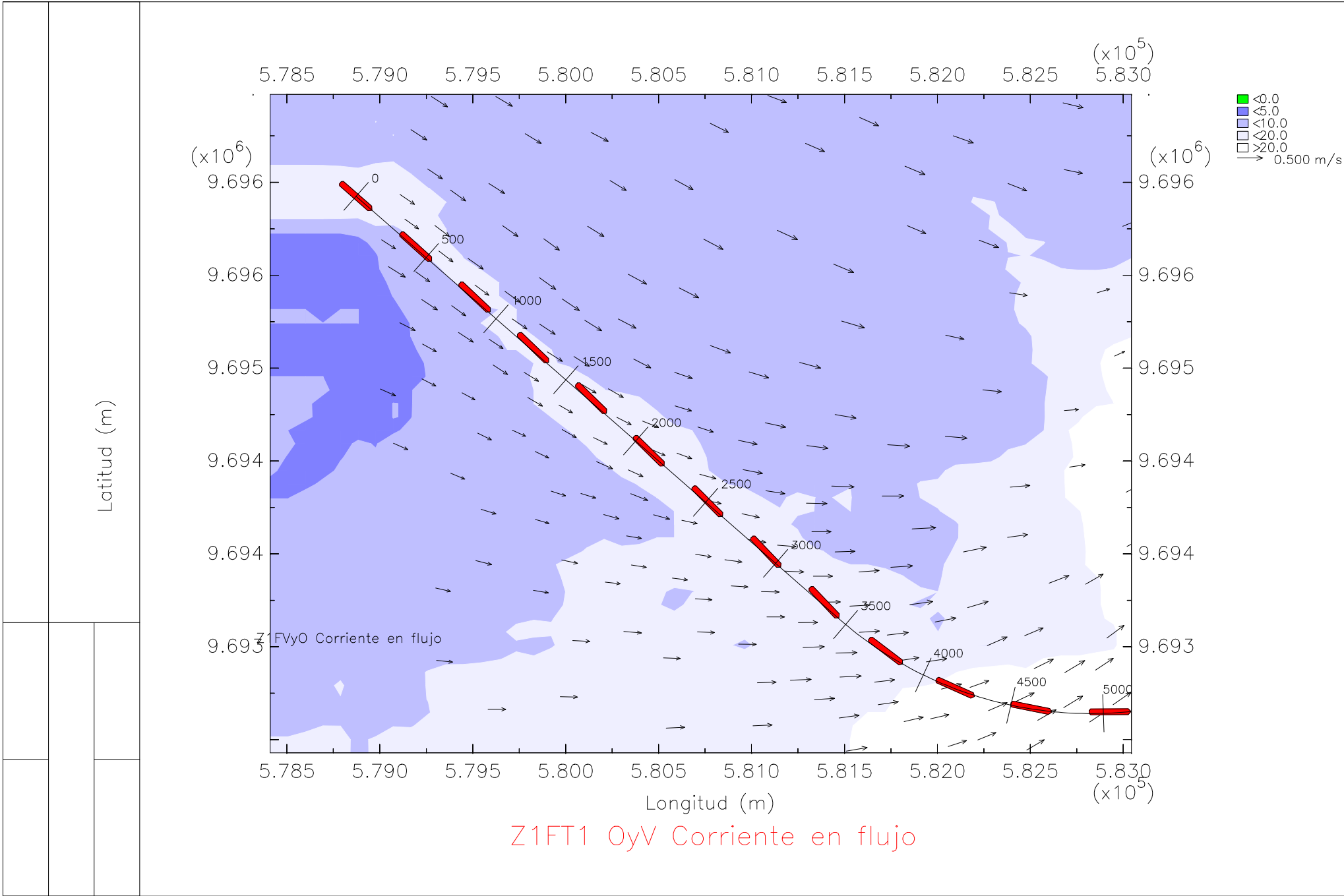
En la zona 1, tramo 1

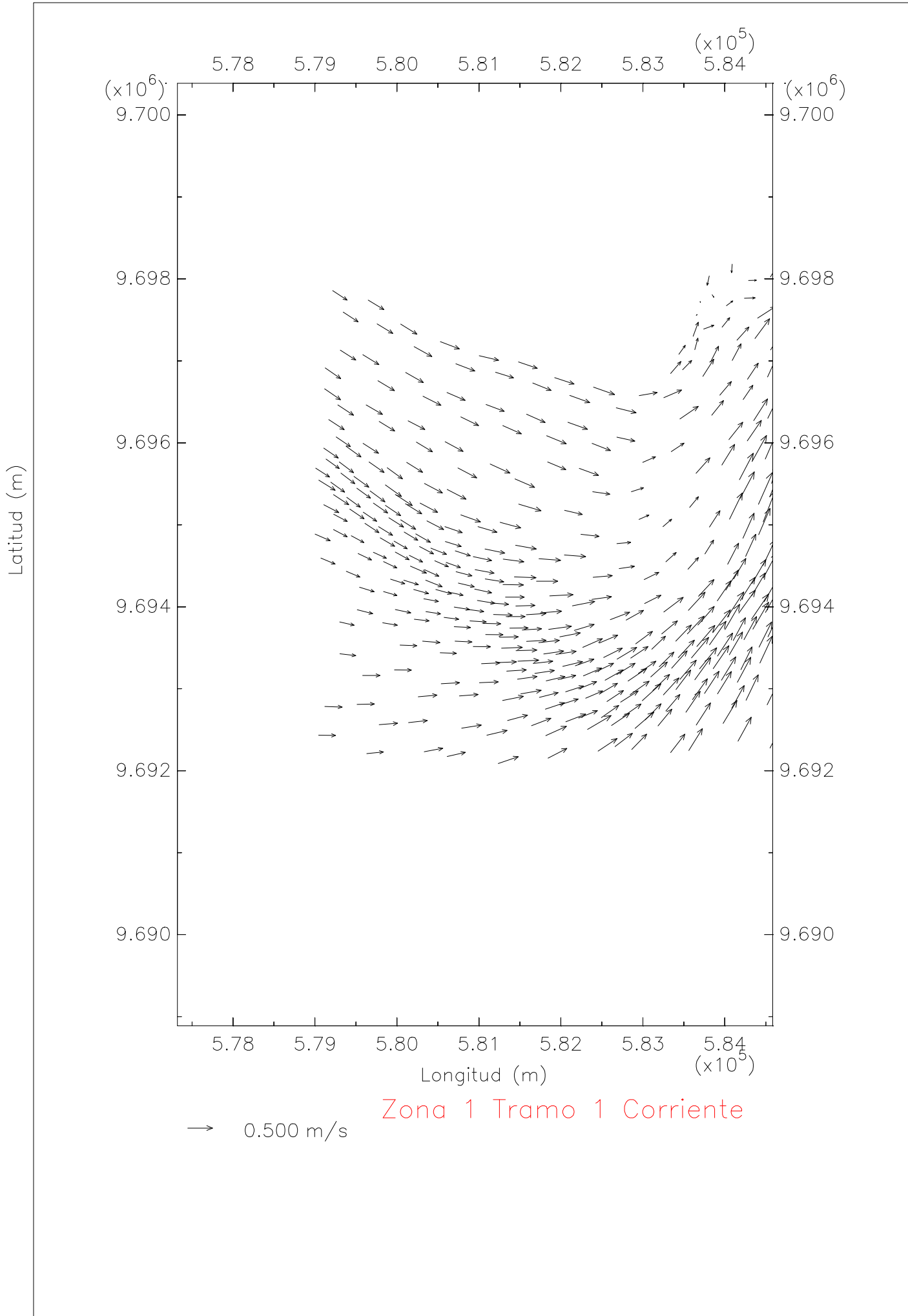
Bajo condiciones de oleaje y llenante

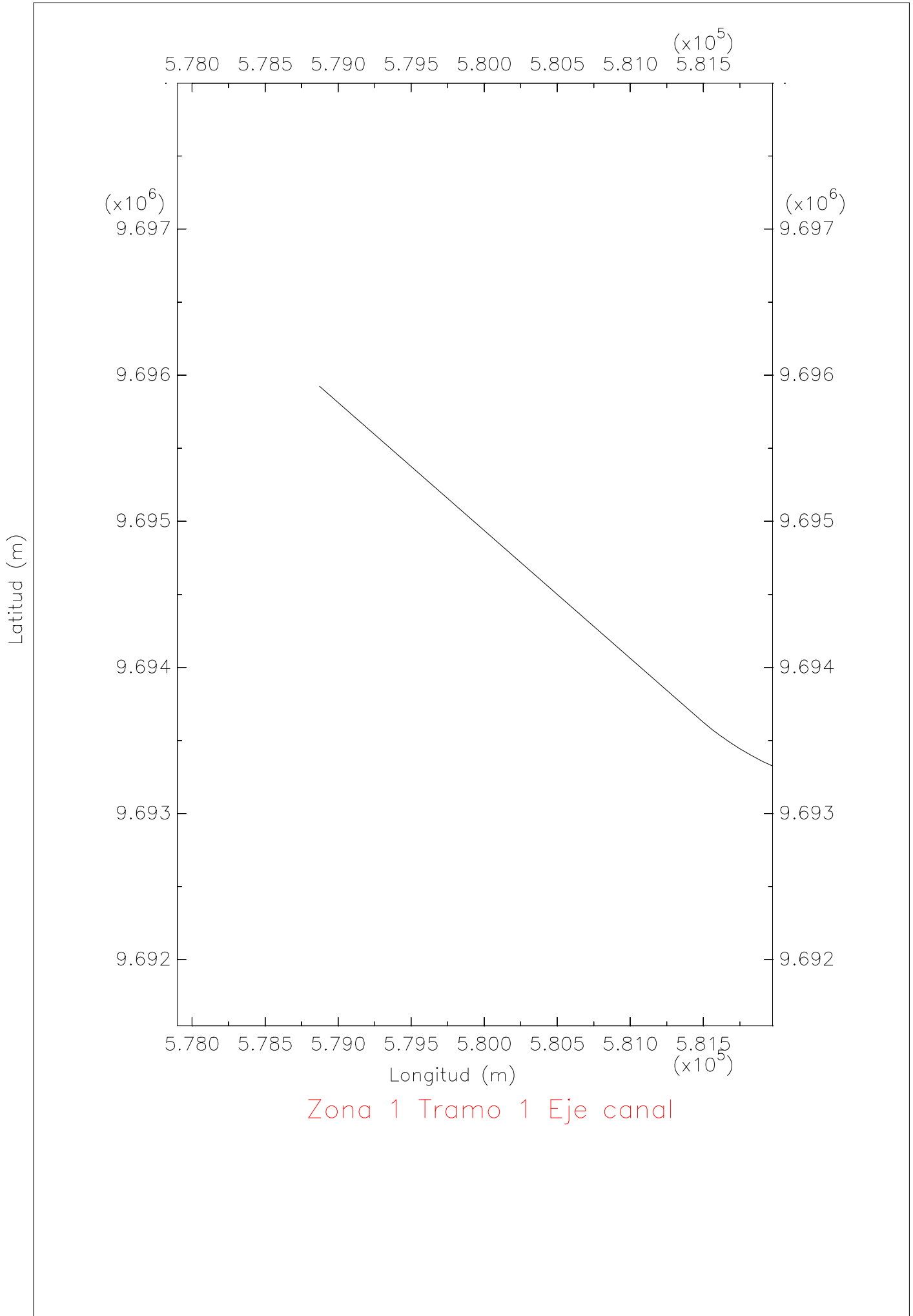


Zona 1 Tramo 1 Profundidad

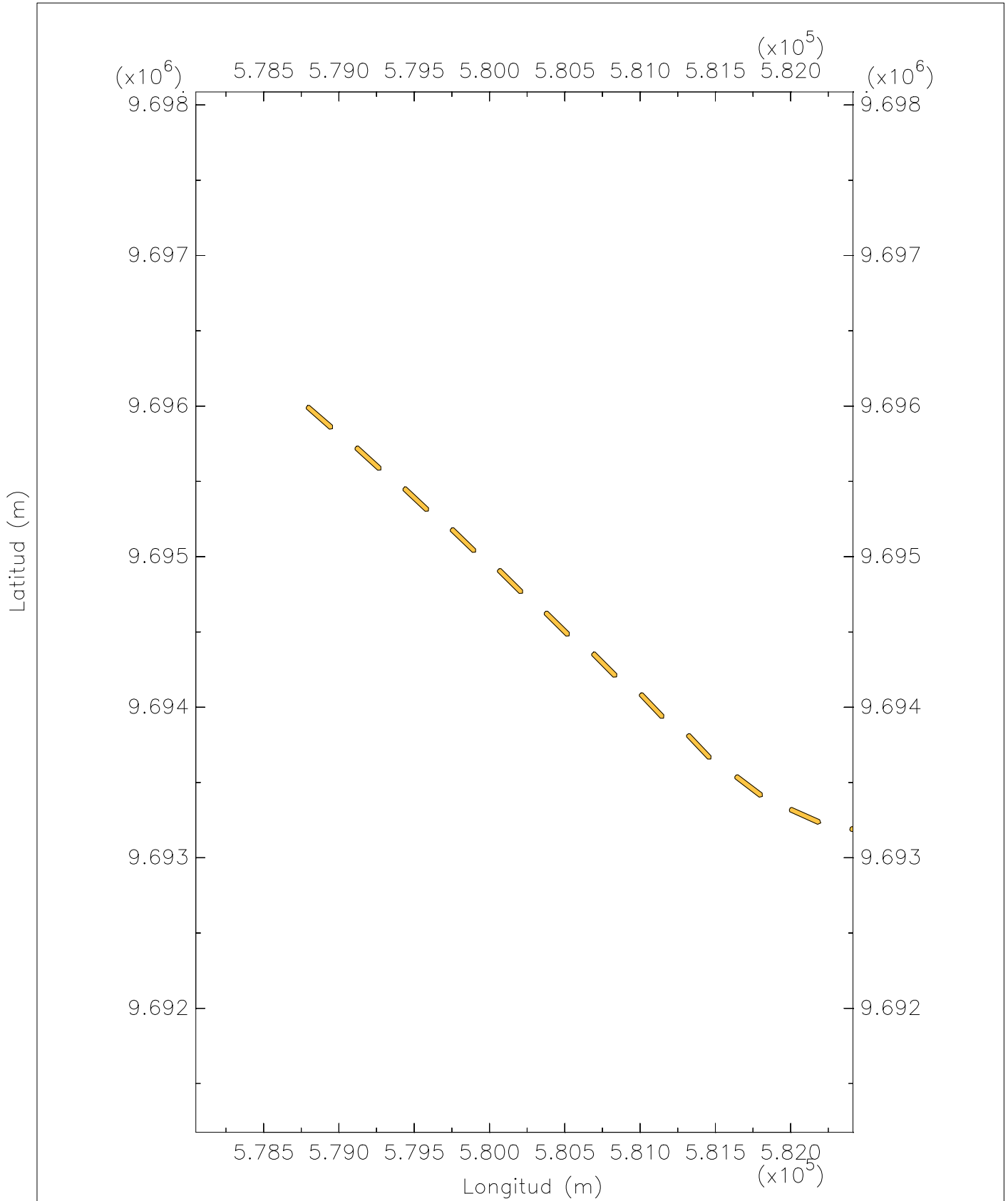






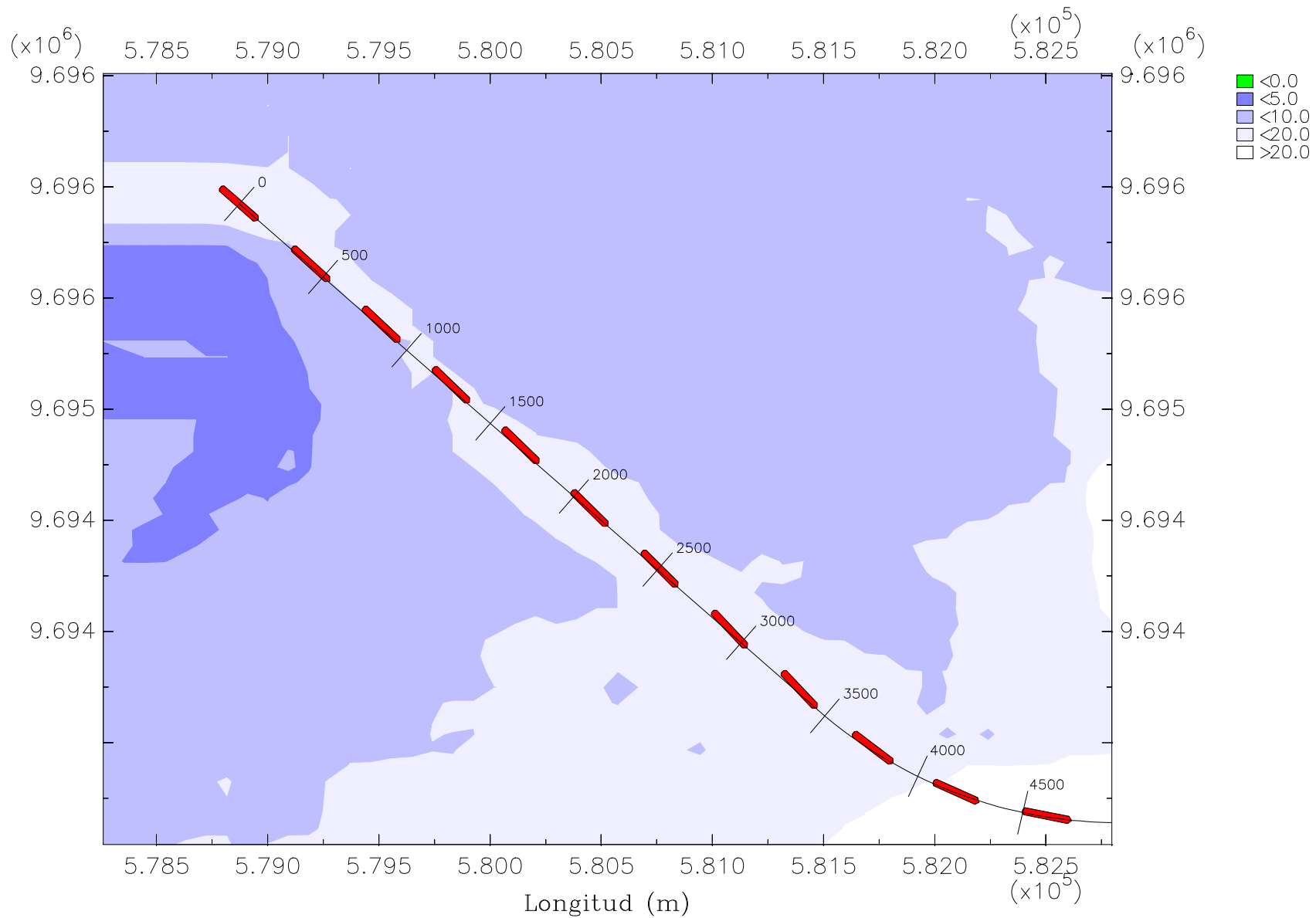


Zona 1 Tramo 1 Eje canal



Z1T10yV Trayectoria del barco granelero en flujo

Latitud (m)



Z1BGT1 OyV Trayectoria del barco granelero en flujo

